

SKILLS LIST and SAMPLE TEST ITEMS

FOR

PRACTICE TEST FOR SCIENCE, GRADE 9

(Test items developed for skills measured in Stanford9)*

Skills

- | | |
|---------------------------------------------|--------------------------------|
| 1.0 Earth and Space | 6.0 Using Information |
| 1.1 Understanding Patterns of Energy/Matter | 6.1 Earth and Space Science |
| 2.0 Physical Science | 6.2 Physical Science |
| 2.1 Understanding Structure | 6.3 Life Science |
| 3.0 Life Science | 6.4 Evidence/Models |
| 3.1 Understanding Organisms | 6.5 Recognize/Analyze Patterns |
| 4.0 Related Processes | 6.6 Comparing Form/Function |
| 4.1 Using Evidence/Models | |
| 4.2 Recognize/Analyze Patterns | |
| 4.3 Comparing Form and Function | |
| 5.0 Thinking Skills | |
| 5.1 Understanding Patterns of Energy/Matter | |
| 5.2 Understanding Structure | |
| 5.3 Understanding Organisms | |
| 5.4 Using Evidence/Models | |
| 5.5 Recognize/Analyze Patterns | |
| 5.6 Comparing Form/Function | |

Number of questions: 40

Number of pages: 16

Approximate testing time: 20 minutes

© EPES TESTING, INC.

(OVER)

*The Stanford9 is published by Harcourt Brace Educational Measurement which does not endorse or attest to the accuracy of this practice test.

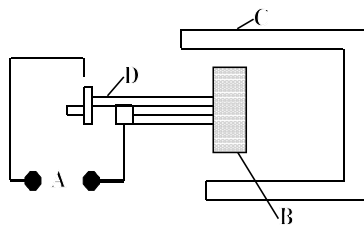
Stanford9 SCIENCE PRACTICE TEST - GRADE 9

DIRECTIONS: Read each question and choose the best answer.

1. What generalization can be made about the relationship between the amount of water absorbed by the roots and the amount of water lost by the leaves?
- A. As the amount of water absorbed by the roots increases, the amount of water lost by the leaves increases.
 - B. As the amount of water absorbed by the roots increases, the amount of water lost by the leaves decreases.
 - D. As the amount of water absorbed by the roots decreases, the amount of water lost by the leaves increases.
 - D. No generalization of the relationship is represented by the data in the table.
-

2. Reptiles reproduce by
- A. external fertilization
 - B. asexual reproduction
 - C. regeneration
 - D. internal fertilization
-

3. Oxygen passes from the environment into an ameba through its
- A. contractile vacuole
 - B. protoplasm
 - C. pellicle
 - D. cell membrane
-



4. In this diagram of an electric motor, which structure is the magnet?
- A. A B. B C. C D. D
-