

SKILLS LIST and SAMPLE TEST ITEMS

FOR

PRACTICE TEST FOR SCIENCE, GRADE 8

(Test items developed for skills measured in ITBS FORM B)*

Skills

- 1.0 Life Science
 - 1.1 Explain
 - 1.2 Infer
 - 1.3 Hypothesis
 - 1.4 Classify
 - 2.0 Earth and Space Science
 - 2.1 Explain
 - 2.2 Infer
 - 2.3 Hypothesis
 - 2.4 Classify
 - 2.5 Measurement
 - 3.0 Physical Science
 - 3.1 Explain
 - 3.2 Infer
 - 3.3 Hypothesis
 - 3.4 Classify
-

Number of questions: 46

Number of pages: 13

Approximate testing time: 30 minutes

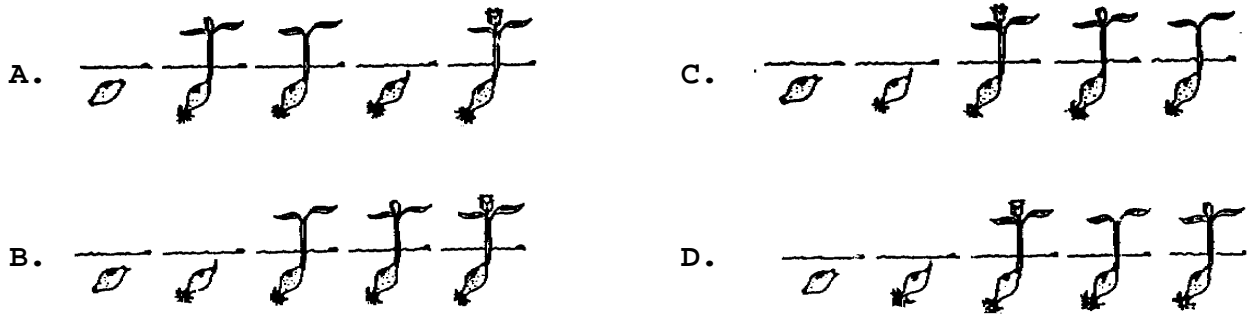
(c) EPES TESTING, INC.

(OVER)

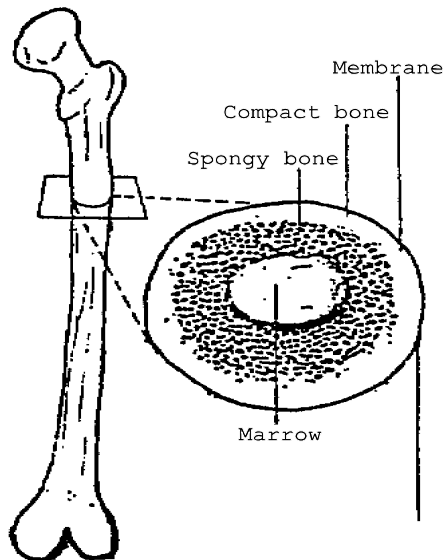
ITBS SCIENCE PRACTICE TEST - GRADE 8 - FORM B

1. What causes the mud at the bottom of a pond to become very fertile during ecological succession?
- A. The remains of living things decay.
 - B. Nutrients rise up from deep underground.
 - C. The water erodes rock into fertile particles.
 - D. The wind deposits seeds.
-

2. Which of the following correctly illustrates the life cycle of a plant?



3. Which part of the bone produces red blood cells?



- A. marrow
- B. spongy bone
- C. membrane
- D. compact bone