

SKILLS LIST and SAMPLE TEST ITEMS

FOR

PRACTICE TEST FOR SCIENCE, GRADE 6

(Test items developed for skills measured in ITBS FORM B)*

Skills

1.0 Life Science

- 1.1 Explain
- 1.2 Infer
- 1.3 Hypothesis
- 1.4 Classify

2.0 Earth and Space Science

- 2.1 Explain
- 2.2 Infer
- 2.3 Hypothesis
- 2.4 Classify

3.0 Physical Science

- 3.1 Explain
 - 3.2 Infer
 - 3.3 Hypothesis
 - 3.4 Classify
-

Number of questions: 42

Number of pages: 13

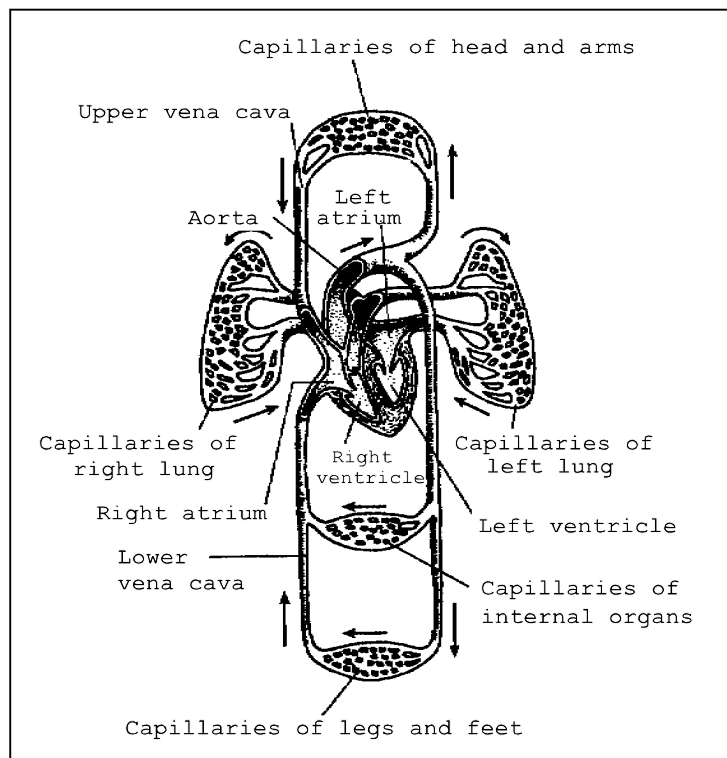
Approximate testing time: 30 minutes

(c) EPES TESTING, INC.

(OVER)

ITBS SCIENCE PRACTICE TEST - GRADE 6 - FORM B

1. Why do brothers sometimes look alike?
- A. They played together as children.
 - B. They grew up in the same family.
 - C. They inherited some of the same characteristics from their parents.
 - D. They lived where the climate was the same.
-



2. When blood returns from the lungs, where does it enter the heart?
- A. left atrium
 - B. upper vena cava
 - C. left ventricle
 - D. lower vena cava
-